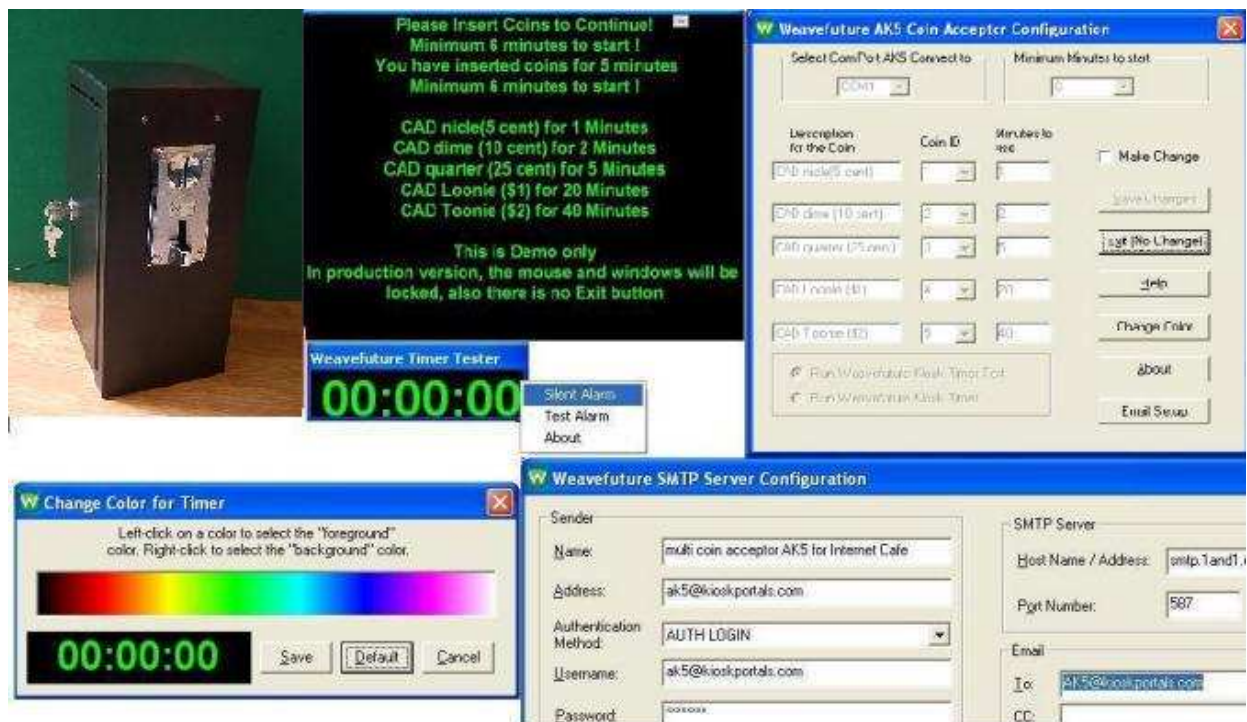


# Weavefuture Coin Op Internet Café Kiosk System 2.0



Version: 2.0  
Date: 5/31/2007 12:07:00 AM



# Table of Contents

<b>1</b>	<b>WEAVEFUTURE COIN OP INTERNET CAFÉ KIOSK SYSTEM COMPOSITION.....</b>	<b>3</b>
<b>2</b>	<b>WEAVEFUTURE COIN ACCEPTOR AK5 .....</b>	<b>3</b>
2.1	WEAVEFUTURE COIN ACCEPTOR AK5 FEATURES.....	3
2.2	SPECIFICATIONS .....	3
2.3	OUTPUT CONNECT TO PC THROUGH RS232 CABLE .....	4
2.4	PROGRAMMING PROCEDURE .....	4
2.4.1	<i>Erase the previous all coin group values setting.....</i>	<i>4</i>
2.4.2	<i>Erase the previous one coin group values setting.....</i>	<i>4</i>
2.4.3	<i>Erase the previous coin value factor setting.....</i>	<i>5</i>
2.4.4	<i>Set coin group values.....</i>	<i>5</i>
2.5	EXAMPLE A : SETUP FOR CANADIAN NICKEL(0.05), DIME (0.10), QUARTER(0.25), LOONY(\$1.00), TOONY (\$2.00).....	5
2.6	EXAMPLE A : SETUP FOR UK £0.10 , £0.20, £0.50, £1, £2.....	6
<b>3</b>	<b>WEAVEFUTURE COIN OP INTERNET CAFÉ KIOSK TIMER AND COIN ACCEPTOR AK5 DRIVER INSTALLATION.....</b>	<b>6</b>
3.1	INSTALLATION PROCEDURE .....	6
3.1.1	<i>Check your PC' Com port availability .....</i>	<i>6</i>
3.1.2	<i>Install the software. ....</i>	<i>7</i>
3.1.3	<i>Configure the Weavefuture Coin Acceptor Driver and Usage of PC .....</i>	<i>11</i>
3.1.4	<i>Reboot the PC.....</i>	<i>14</i>
3.1.5	<i>Test Weavefuture Coin Acceptor AK5 and software.....</i>	<i>15</i>
3.1.6	<i>Alarm when the time countdown from 10 to 0 second. ....</i>	<i>17</i>
<b>4</b>	<b>WEAVEFUTURE INTERNET KIOSK BROWSER, THIS IS OPTIONAL SOFTWARE. ....</b>	<b>17</b>
4.1	INSTALLATION PROCEDURE .....	18



# 1 Weavefuture Coin Op Internet Café Kiosk System Composition

Weavefuture Coin Op Internet Café Kiosk System is built for Internet Cafe and Internet Kiosk. **It has patent pending solution.** The Weavefuture Coin Acceptor AK5 System include:

- Include Weavefuture Coin Acceptor AK5
- include Weavefuture Coin Acceptor AK5 Service Driver working with Windows 2000/XP
- include Weavefuture Internet Café Kiosk Timer 1.0 tested on Windows 2000/XP
- include Free Weavefuture Internet Kiosk Browser 1.0 tested on Windows 2000/XP
- include RS232 Cable
- include 110V AC adaptor
- .
- Just connect it to PC and install the software as administrator, run it as limited user, your PC turned into self-service Internet Cafe Machine.

## 2 Weavefuture Coin Acceptor AK5

Weavefuture Coin Acceptor is made for PC kiosk, it could not work by itself, and it has to work with Weavefuture Software kits include in this documents

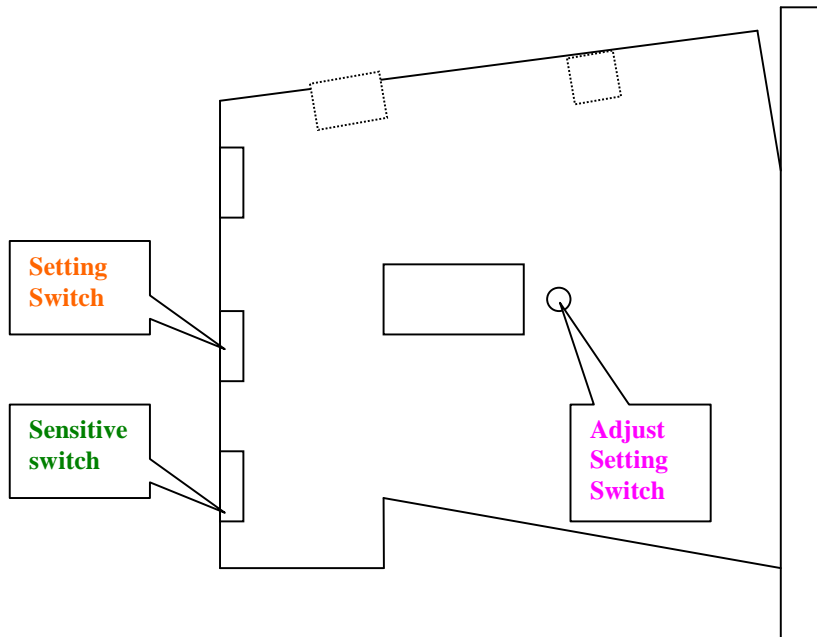
### 2.1 Weavefuture Coin Acceptor AK5 Features

Armed with the powerful electronic microcontroller, (like a small computer system) the AK5 can automatically identify the coin by material, thickness and diameter.

- Multiple coins  
It designed to set 5 different output value groups at the same time; every output value set can program 10 types' coins.  
Different output values mean number of output pulse.
- Setup coins by training  
Programming the type of coin by training, when AK5 is in programming mode it memorize the data of material, thickness and diameter of the coins. When AK5 is in working mode it will recognize the coins by a complicated calculation and process these memorize data.
- Adjustable the recognized accuracy  
There is a switch in the AK5 can adjust the accurate degree of recognizing sensitive.
- Alarm guard system.  
The AK5 has software guard system; this guard system has alarm, which prevents opportunistic behaviors.

### 2.2 Specifications

- Apply to coin's diameter = 18m/m - 29m/m
- Apply to coin's thickness = 1.2m/m - 3.0m/m
- Work voltage = DC12V  $\pm$  20%
- Current in 50MA in power saving mode, wake up mode 500MA
- Temperature = -20C~50C



- **Setting Switch** set the AK5 to working mode (switch to **start**) or set the programming mode (switch to **set**)
- **Adjust Setting Switch**, which for adjusting the coin's value, can set the coin value, when the AK5 in programming mode (**Setting Switch** switch to **set**)
  - When the **Sensitive Switch** also switch to **NOM**, "00-99" means how many times of the output pulse signal will be sent when the programmed coin was deposited, "01" means this group may output 1pulse.
- **Sensitive Switch** when the AK5 in working mode, it is for accepting the coin's sensitive degree, it detects the difference between real/fake coins when inserted. when AK5 in programming mode, it also help the setup the coin output value
- To get the optimal effect, Please turn on power about 10 minutes before using or setting.
- Connecting instructions of connector:
  - Red line ——DC+12V
  - Black line ——GND(Ground)

## 2.3 Output Connect to PC through RS232 Cable

Although the output is RS232 Cable, but it not follow the RS232 standard, **It designed only used for Weavefuture Coin Acceptor AK5 only, and it should not used for other usage, otherwise may cause damages**

## 2.4 Programming Procedure

### 2.4.1 Erase the previous all coin group values setting

- Turn the **Sensitive Switch** to "NOM" position
- Turn the **Setting Switch** to "SET" position enter programming mode, LED display "00"
- Press and hold the **Adjust Setting Switch** for 5 seconds or more until hear a "BI" sound and LED will display "C", then all the coin value setting is erased
- Turn the **Setting Switch** to "START" position exit programming mode

### 2.4.2 Erase the previous one coin group values setting

This is only for advance user.

- Turn the **Sensitive Switch** to "NOM" position
- Turn the **Setting Switch** to "SET" position enter programming mode, LED display "00"
- Press the **Adjust Setting Switch** to adjust the coin value in turn and let the LED display the value, which want to erase.



- Press and hold the **Adjust Setting Switch** for 5 seconds or more until hear a “BI” sound and LED will display “C”, then this coin group value setting is erased
- Turn the **Setting Switch** to the “START” position exit programming mode

#### 2.4.3 Erase the previous coin value factor setting

- Turn the **Sensitive Switch** to “MGN” position
- Turn the **Setting Switch** to “SET” position enter programming mode, LED display “P2”
- Press and hold the **Adjust Setting Switch** for 10 seconds until hear a “BI” sound and LED will display “C”, then coin value setting is erased
- Turn the **Sensitive Switch** to stir to the “NOM” position
- Turn the **Setting Switch** to stir to the “START” position to exit programming mode

#### 2.4.4 Set coin group values

- Turn the **Sensitive Switch** to the “NOM” position
- Turn the **Setting Switch** to “SET” position enter programming mode, LED display “00”
- Press the **Adjust Setting Switch** to adjust the coin value in turn and let the LED display the value, which needed, for example “01” or “02”. The value increase 1 upon 1 press. If passed the desirable value, just turn the **Setting Switch** to stir to “START” then turn back to “SET” again the LED will display “00”, the value can be selected again. This number stands for **Coin ID** in PC
- Deposit the coins in turn, can program up to 10 coins .If less than 10 coins can add and store later. For example can prepare 10 quarters as different condition as possible. Or can deposit 10 same or different tokens.
- Repeat above two steps to set other coin group values.
- Turn the **Setting Switch** to stir to the “START” position to exit programming mode

## 2.5 Example a : Setup for Canadian Nickel(0.05), Dime (0.10), Quarter(0.25), Loony(\$1.00), Toony (\$2.00)

1. Clear all the settings. Following the 2.4.1 and 2.4.3 to erase previous settings.
2. Prepare 10 Canadian Nickels, 10 Canadian Dimes, 10 Canadian Quarters, 10 Loonies, 10 Toonies.
3. Turn the **Sensitive Switch** to **NOM**
4. Turn the **Setting Switch** to **SET** going to Programming mode, the display will show “00”
5. press **Adjust Setting Switch** once, the display will show “01” which stands for **Coin ID= 1** in PC, drop the 10 nickels in sequence, when drop the 10<sup>th</sup> nickels, the display will show “F” means the setting is done.( if press more time accidentally, for example the display show “01” or “02”, then turn the **Setting Switch** to **START**, then turn **Setting Switch** to **SET** again the display will show “00”.)
6. press **Adjust Setting Switch** once, the display will show “02” which stands for **Coin ID= 2** in PC, drop the 10 Dimes in sequence, when drop the 10<sup>th</sup> Dime, the display will show “F” means the setting is done
7. press **Adjust Setting Switch** once, the display will show “03” which stands for **Coin ID=3** in PC, drop the 10 quarters in sequence, when drop the 10<sup>th</sup> quarter, the display will show “F” means the setting is done.
8. Press **Adjust Setting Switch** 3 times until the display show “04” which stands for **Coin ID= 4** in PC, drop the 10 Loonies in sequence, when drop the 10<sup>th</sup> Loonies, the display will show “F” means the setting is done.
9. Press **Adjust Setting Switch** 4 times until the display show “05” which stands for **Coin ID= 5** in PC, drop the 10 Toonies in sequence, when drop the 10<sup>th</sup> Toonies, the display will show “F” means the setting is done.
10. Turn **Setting Switch** to **START**, then your AK5 is ready to use.
11. When drop 1 nickels, it will send to PC as **Coin ID= 1**; drop 1 Dime, it will send to PC as **Coin ID= 2**; drop 1 quarter, it will send to PC as **Coin ID=3**; drop 1 Loony it will send to PC as **Coin ID= 4**; drop 1 Toony it will send to PC as **Coin ID= 5**;
12. Please reference the software Weavefuture Coin Acceptor AK5 Configuration part for detail



## 2.6 Example a : Setup for UK £0.10 , £0.20, £0.50, £1, £2

13. Clear all the settings. Following the 2.4.1 and 2.4.3 to erase previous settings.
14. Prepare 10 UK £0.10, 10 UK Dimes, 10 UK Quarters, 10 Loonies, 10 Toonies.
15. Turn the **Sensitive Switch** to **NOM**
16. Turn the **Setting Switch** to **SET** going to Programming mode, the display will show “00”
17. press **Adjust Setting Switch** once, the display will show “01” which stands for **Coin ID= 1** in PC, drop the 10 £0.10 in sequence, when drop the 10<sup>th</sup>£0.10, the display will show “F” means the setting is done.( if press more time accidentally, for example the display show “01” or “02”, then turn the **Setting Switch** to **START**, then turn **Setting Switch** to **SET** again the display will show “00”.)
18. press **Adjust Setting Switch** once, the display will show “02” which stands for **Coin ID= 2** in PC, drop the 10 £0.20 in sequence, when drop the 10<sup>th</sup>£0.20 , the display will show “F” means the setting is done
19. press **Adjust Setting Switch** once, the display will show “03” which stands for **Coin ID=3** in PC, drop the 10 £0.50 in sequence, when drop the 10<sup>th</sup>£0.50 , the display will show “F” means the setting is done.
20. Press **Adjust Setting Switch** 3 times until the display show “04” which stands for **Coin ID= 4** in PC, drop the 10 £1 in sequence, when drop the 10<sup>th</sup> £1 , the display will show “F” means the setting is done.
21. Press **Adjust Setting Switch** 4 times until the display show “05” which stands for **Coin ID= 5** in PC, drop the 10 £2 in sequence, when drop the 10<sup>th</sup>£2 , the display will show “F” means the setting is done.
22. Turn **Setting Switch** to **START**, then your AK5 is ready to use.
23. When drop £0.10 , it will send to PC as **Coin ID= 1**; drop 1 £0.20 , it will send to PC as **Coin ID= 2**; drop 1 £0.50, it will send to PC as **Coin ID=3**; drop 1 £1 it will send to PC as **Coin ID= 4**; drop 1 £2, it will send to PC as **Coin ID= 5**;
24. Please reference the software Weavefuture Coin Acceptor AK5 Configuration part for detail

## 3 Weavefuture Coin Op Internet Café Kiosk Timer and Coin Acceptor AK5 Driver Installation

Weavefuture Internet Café Kiosk Timer is software, it include Weavefuture Coin Acceptor Ak5. It is tested only on Window2000/XP and also need install Internet Explore 6.0 or above version.

### 3.1 Installation Procedure

#### 3.1.1 Check your PC' Com port availability

Most current PC have only one com port, usually is COM1

Press CTRL+ESCAPE for the Start Menu.

Press R for run.

Type COMMAND.

Press ENTER.

Type CD\ and press ENTER.

Type Mode com1

You will see message show on Status for Device COM1 or COM2, COM3.

That means you have available Com port to use.

In this case, as shown in following picture is COM1 available, now you can connect the Weavefuture Coin Acceptor AK5's RS232 cable (this cable is specially made for AK5, do not use it for other device or use other RS232 cable for AK5, do so may cause damages) to the COM1 port of your PC.



```
GA Command Prompt
E:\>mode
Status for device LPT1:
-----
Printer output is not being rerouted.

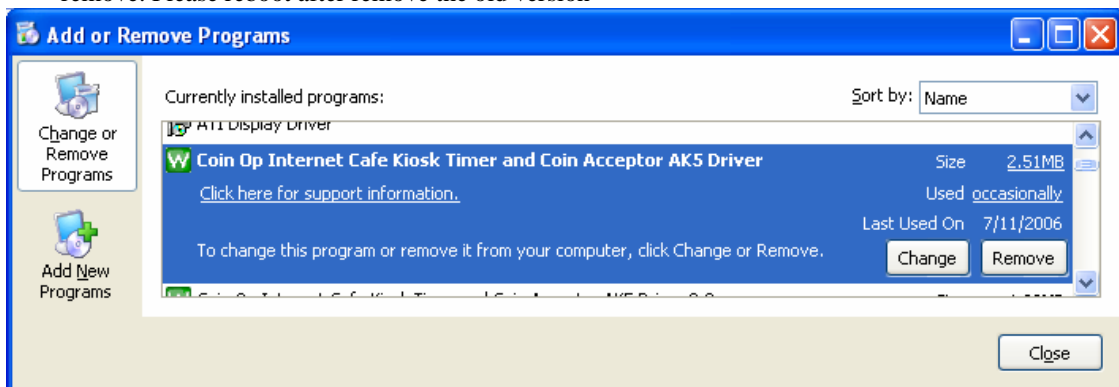
Status for device COM1:
-----
Baud:          9600
Parity:        Even
Data Bits:     7
Stop Bits:     1
Timeout:       OFF
XON/XOFF:      OFF
CTS handshaking: OFF
DSR handshaking: OFF
DSR sensitivity: OFF
DTR circuit:   ON
RTS circuit:   ON

Status for device CON:
-----
Lines:         300
Columns:       80
Keyboard rate: 31
Keyboard delay: 1
Code page:     437

E:\>
```

### 3.1.2 Install the software.

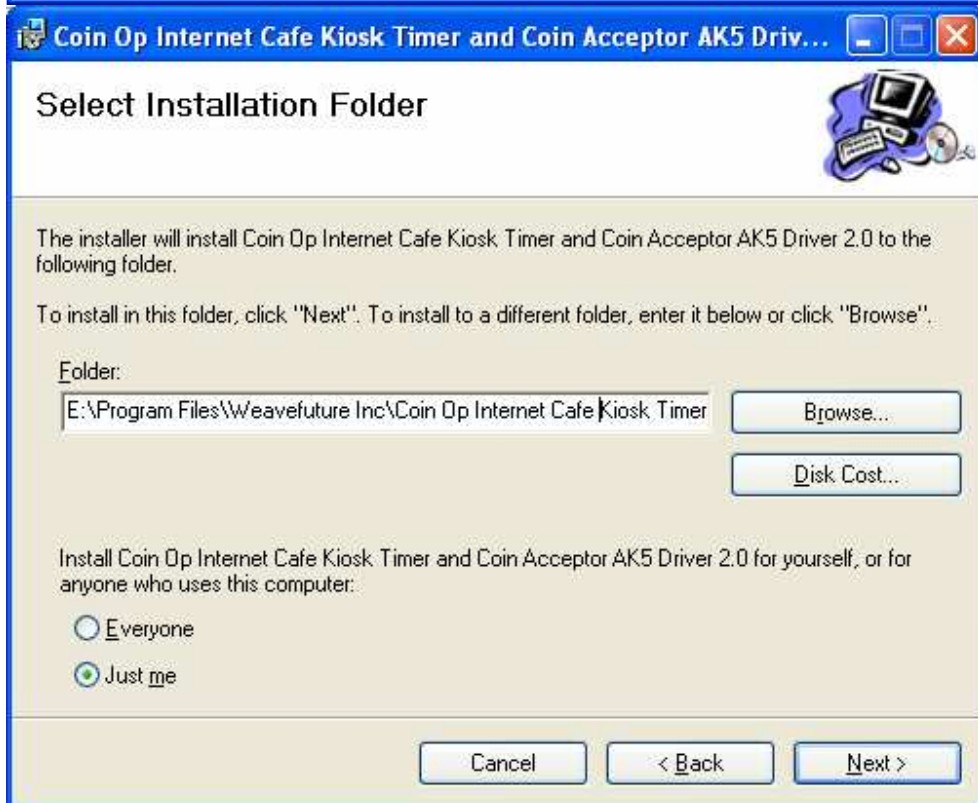
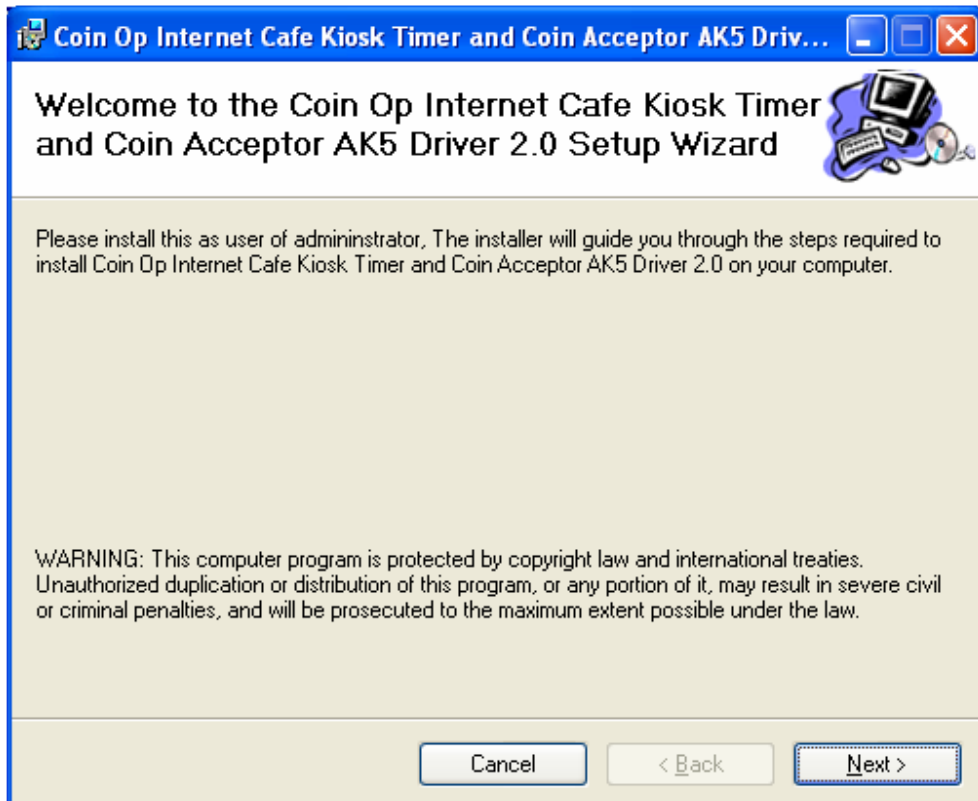
- Login Windows 2000/XP as a user of Administrator.
- If you have not installed old version please skip this step. Remove old version if you have install the old version before by select Start->All-Programs->Control Panel->add or Remove Programs -> remove. Please reboot after remove the old version



- Download software from <http://www.weavefuture.com> where you will be informed the detail URL location after you purchase the Weavefuture Coin Acceptor AK5 System.

**Do not install the software until you have hardware Weavefuture Coin Acceptor AK5 configured and attached the its RS232 Cable to the right com port of you PC (default COM1), otherwise it may cause you PC to locked and you have to reinstall Operation System.**

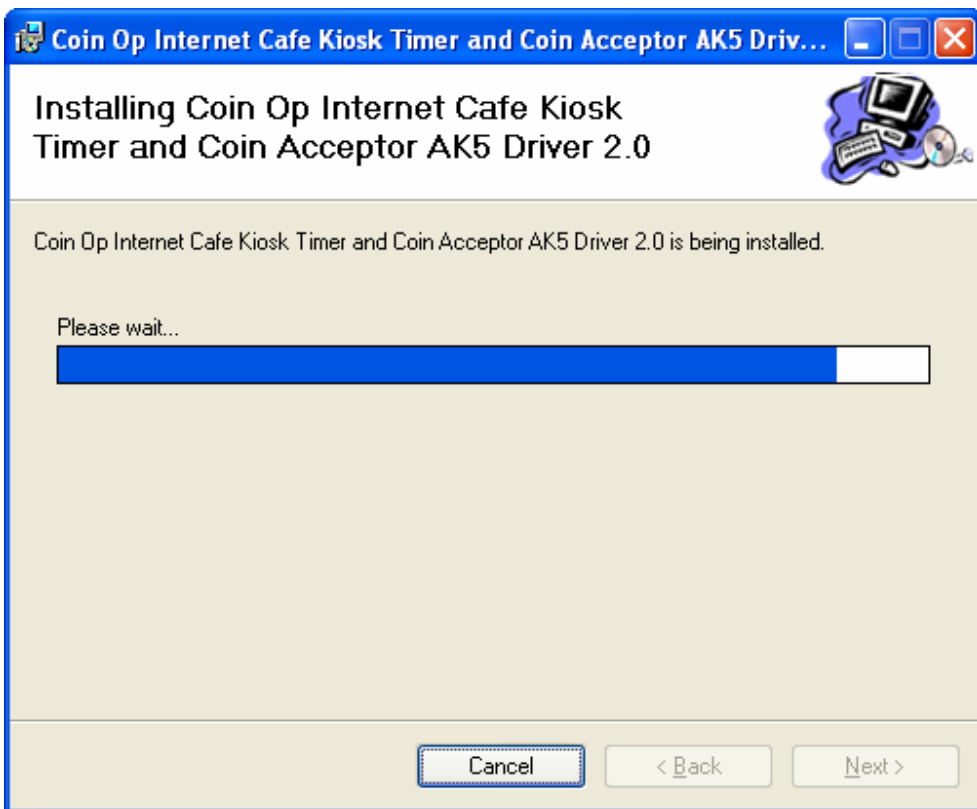
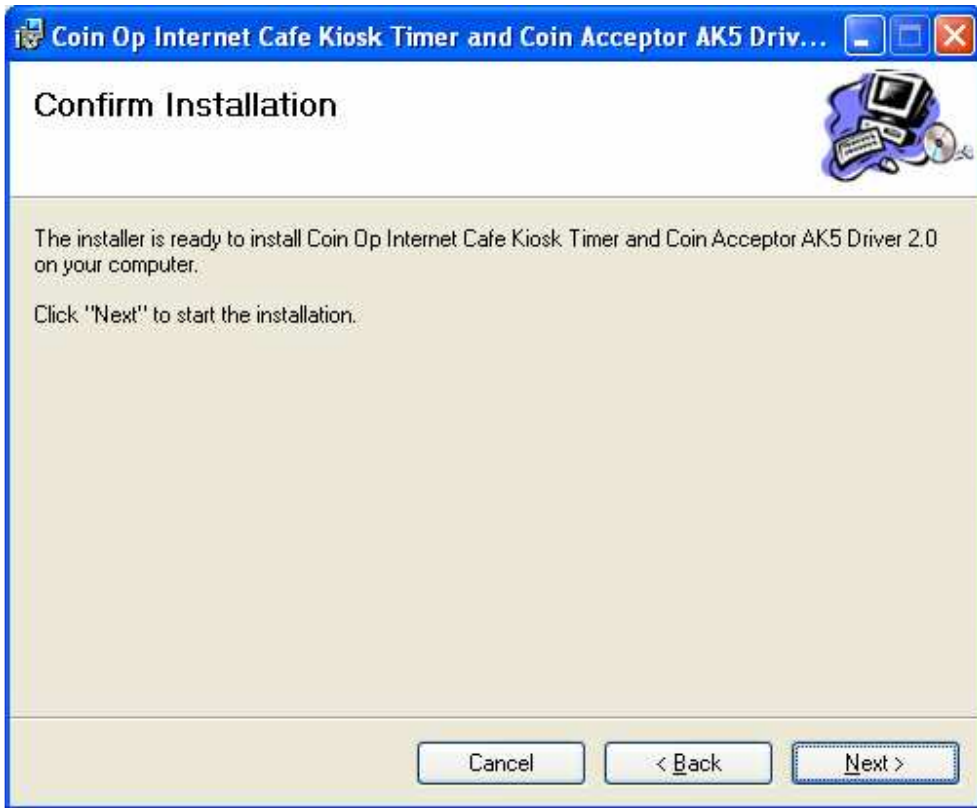
- Click downloaded software CoinOpInternetCafeKioskSoftware.msi.
- Run CoinOpInternetCafeKioskSoftware.msi by double click it in the Windows Explore (not IE)







WeaveFuture



Please check next section for detail how to use this configuration.



**Weavefuture AK5 Coin Acceptor Configuration**

Select Com Port AK5 Connect to:

Minimum Minutes to start:

Description for the Coin	Coin ID	Minutes to use
<input type="text" value="CAD nicle(5 cent)"/>	<input type="text" value="1"/>	<input type="text" value="1"/>
<input type="text" value="CAD dime (10 cent)"/>	<input type="text" value="2"/>	<input type="text" value="2"/>
<input type="text" value="CAD quarter (25 cent)"/>	<input type="text" value="3"/>	<input type="text" value="5"/>
<input type="text" value="CAD Loonie (\$1)"/>	<input type="text" value="4"/>	<input type="text" value="20"/>
<input type="text" value="CAD Toonie (\$2)"/>	<input type="text" value="5"/>	<input type="text" value="40"/>

Make Change

Run Weavefuture Kiosk Timer Test

Run Weavefuture Kiosk Timer

It is better to wait for 30 seconds to close this configuration. If there is any problem you can always reinstall the software.

**Coin Op Internet Cafe Kiosk Timer and Coin Acceptor AK5 Driv...**

### Installation Complete

Coin Op Internet Cafe Kiosk Timer and Coin Acceptor AK5 Driver 2.0 has been successfully installed.

Click "Close" to exit.

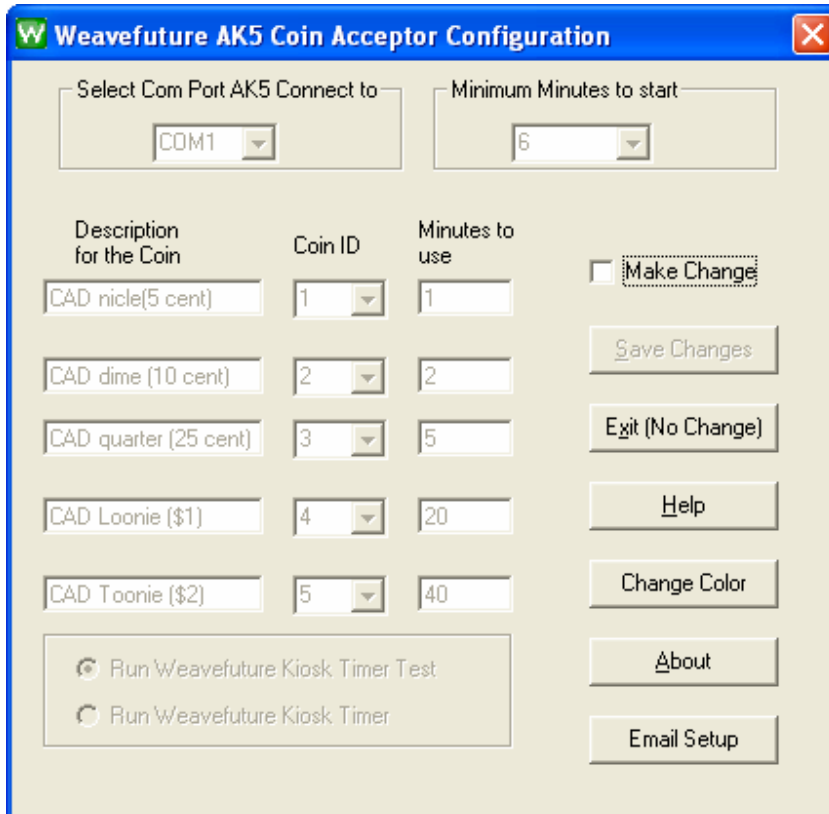
Please reboot your PC!



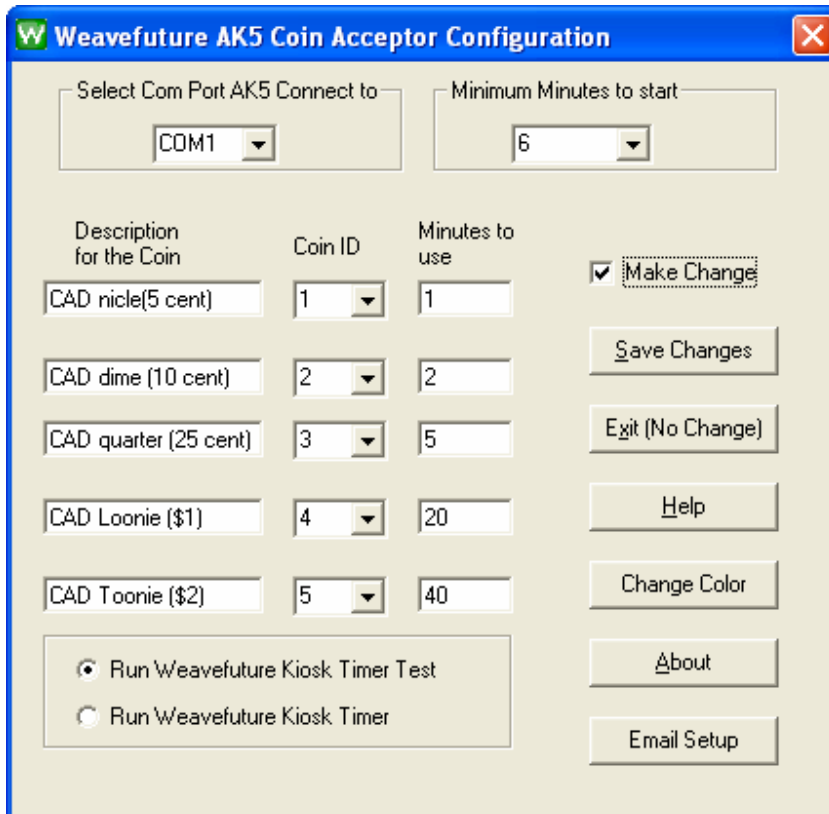
### 3.1.3 Configure the Weavefuture Coin Acceptor Driver and Usage of PC (please reboot the PC every time the configuration is changed)

The following Configuration Window show:  
The Com port is default COM1.

Coin ID is 1,2,3,4,5 have to match with the hardware Coin Acceptor AK5's configuration, detail see 2.5 example of Canadian Nickel(0.05), Dime (0.10), Quarter(0.25), Loony(\$1.00), Toony (\$2.00)



This is default setting for Canadian Coin Sets. If you want to change check the check box “Make Change” and click “Save Change” after you done the change  
The Com Port default is COM1; you may change it to match your PC's Com port, which attached the Weavefuture Coin Acceptor AK5.



For Example: The above picture show that I change the 5 cent CAD coin only can use computer for 0.5 minute (30 seconds).

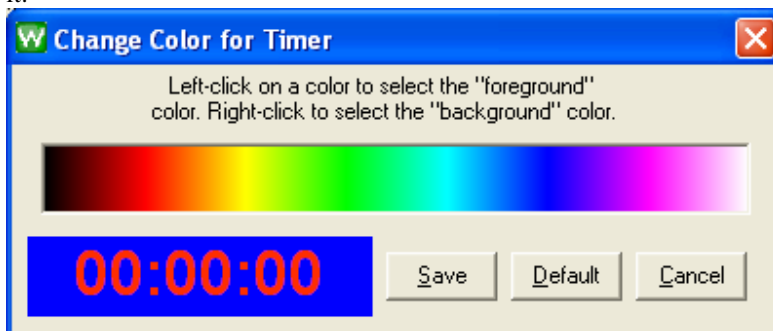
**!!! Important:!!!** Program will start default to run “Weavefuture Kiosk Timer Test”, which will not lock the screen and special keys.

After finish test for coin acceptor successfully, then you can select “RUN Weavefuture Kiosk Timer” and save the change.

**Minimum Minutes to start:** user have to drop coins to accumulate the total minutes great that (6 minutes for current setting) in order to use the computer.

**Change Color:** if you do not like the background color or the font color you can change whatever you like.

it.



**Email Setup:** This function will setup SMTP Server, which will send the coin dropped log information to your email address. We have default SMTP Server configured for you to test for 10 days. You have to use your own SMTP Server to routing email address. Please note that because of the SMPT Server is ours. We will also receive email for this log information. If you want us to setup a new SMTP account only for your own and continue use our SMTP Server. Please let us know. It is only US\$2 per month.



**Weavefuture SMTP Server Configuration**

**Sender**

Name: multi coin acceptor AK5 for Internet Cafe

Address: ak5@kioskportals.com

Authentication Method: AUTH LOGIN

Username: ak5@kioskportals.com

Password: \*\*\*\*\*

**SMTP Server**

Host Name / Address: smtp.1and1.com

Port Number: 587  SSL

**Email**

To: AK5@kioskportals.com

CC:

Subject: PC Unique ID: 00-13-D3-03-BC-5F

Body: This email will send today's and yesterday's logs of games PC1 from Internet Cafe Room 1.

Use DNS MX lookup to determine mail server to use

Send Log every 12 Hours

**Email Information (Advanced usage)**

Auto Connect to the Internet

Bind to: ANY\_IP\_ADDRESS

Encoding: Western European (ISO)

Send all messages MIME encoded

Send all messages as HTML

Message Priority: None Defined

- Email: To (Red circle): You need put your email address which will receive email with log file attachment.
- The blue circles items are the least information you need for SMTP server setup, please ask your Internet Service Provider for these information.
- The other items are for advanced use who know SMTP server very much, please also ask your Internet Service Provider if they support these futures
- You can choose how often to received the email with log file attachment (today and/or yesterday's log files if they are exist). You can also disable this email feature by select disable in the "Send Log ever".
- The first time after installation, you will not see any log files in the email attachment is because you do not have any log files yet (You need to drop coins in order to create the log files).

About the log files: The log files log information of your coin dropped. The log file only created when first coin dropped every day. The information looks like following.

Coin ID	Minutes per coin	dropped date time
		:2006/07/04
1	1	10:07:40
		:2006/07/04
3	5	10:12:20
		:2006/07/04
3	5	15:30:49
		:2006/07/04
5	20	15:32:41
		:2006/07/04
3	5	15:32:44
		:2006/07/04
4	10	15:33:05
		:2006/07/04
3	5	15:51:10



### 3.1.4 Reboot the PC

Now you finished the Installation. Reboot you PC and re Login as Administrator and you will see that a Weavefuture Kiosk Timer Test application is running.

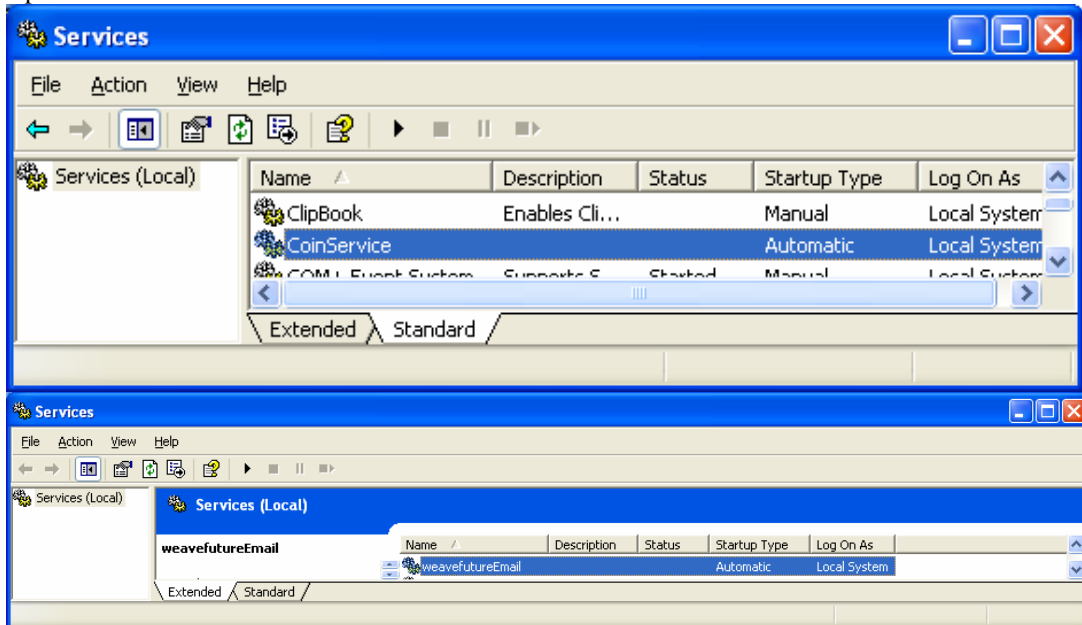


**The following topics are for advanced user, so you do not have to reboot the PC, but is not recommended.**

How do you know your driver is installed or not?

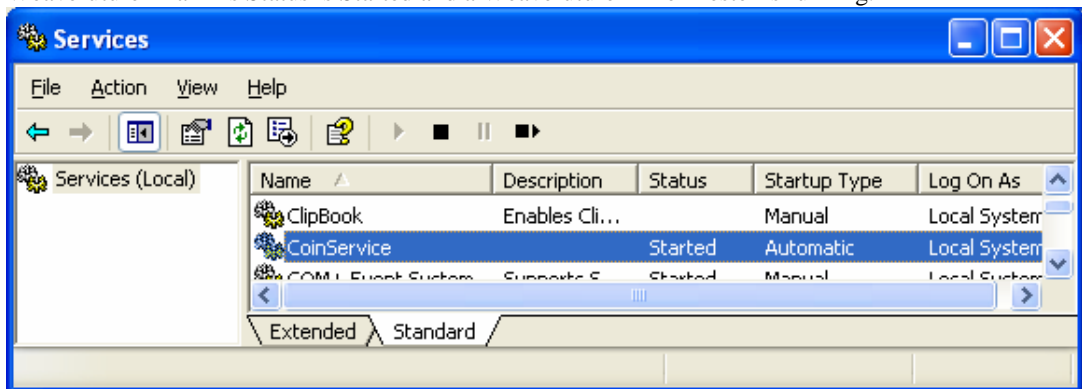
Please check it in the Service Window.

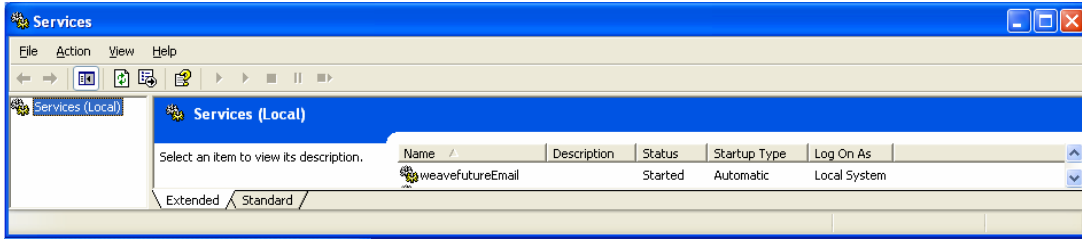
Open Windows Start->Control Panel->Administrative Tools->Services



If you see CoinService and WeavefutureEmail under Services Window, it means the driver is installed successfully then right click it and select “Start” in a Pop Up menu, or

Your will see the Weavefuture AK5 Coin Acceptor Service Driver, “CoinService” and ” WeavefutureEmail” ‘s Status is Started and a Weavefuture Timer Tester is running.





### 3.1.5 Test Weavefuture Coin Acceptor AK5 and software

(The PC will be locked if you select to run Weavefuture Kiosk Timer instead of Weavefuture Kiosk Timer Test in the Weavefuture Coin Acceptor Configure 2.0 if the timer runs to 0)

When the **minimum minutes to start is disabled:**

Drop the coins set you have set up to test if the AK5 Coin Acceptor is working.  
I drop a CAD Quarter, it give me 5 minutes to use PC



Drop a Quarter it will give me 5 Minutes, the timer will show again.



(It show 4:48 because I could catch screenshot quickly)

Continue test other Coins to see if the AK5 response or if the value of usage is right.

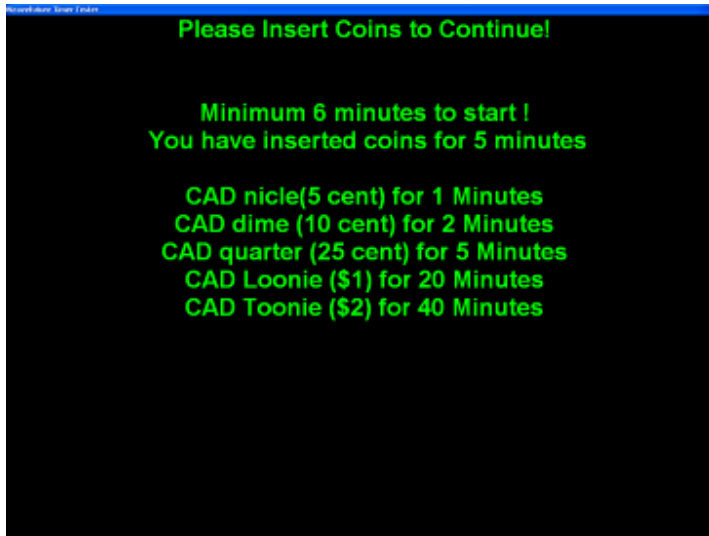
**When you have minimum start minutes set to 6.**

When Timer run to zero, the following window will show:





When you drop a quarter which is 5 minutes but not reach 6 minutes which is minimum time to start following windows shows

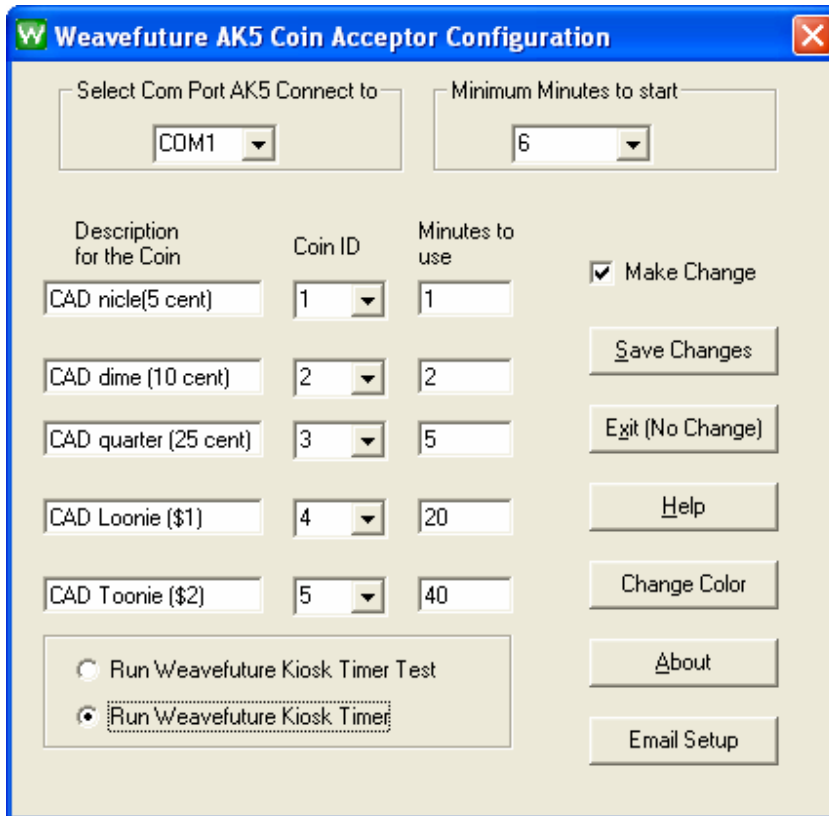


When you drop another quarter then it is really start



Now after test the is successful you can go back to Weavefuture Coin Acceptor AK5 Config (see **3.1.3**)  
Change the configuration as run the “Weavefuture Kiosk Timer”  
By select “RUN Weavefuture Kiosk Timer”





Reboot the PC and start the PC as other limited user, now you can only

**If you change the configuration to Run Weavefuture Kiosk Timer, You could not access to your PC unless there is usage time left on you PC. You have to drop the coin in order to use your computer.**

### 3.1.6 Alarm when the time countdown from 10 to 0 second.

User can turn on/off the alarm in the menu of the timer. By right click the Weavefuture Internet Café Timer.



## 4 Weavefuture Internet Kiosk Browser, this is optional software.

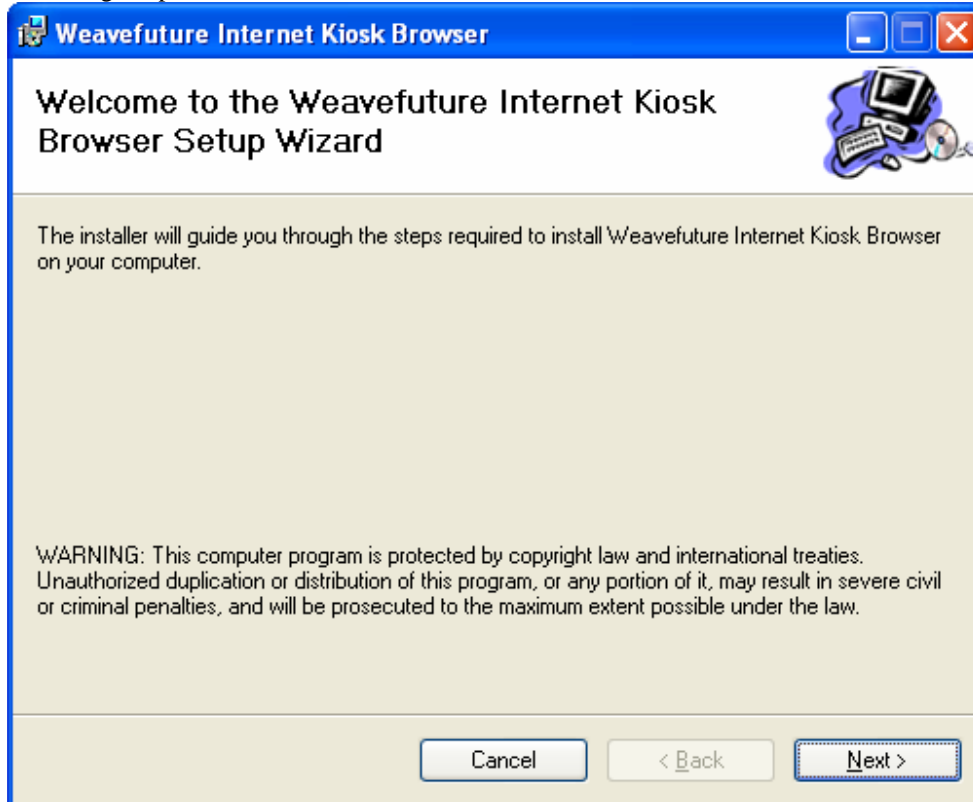
Weavefuture is multiple tabs Internet Browser build especially for self-service Internet Kiosk. This software is only tested on Windows 2000/XP and need Internet Explore 6.0 and up installed. This software will disable special keys like “Ctrl-Alt-Del”, “Alt Tab”, etc. and clean up the desktop and task bar etc.

You can use this downloaded software only for evaluation propose, you have to send the Demo ID to our company and make payment in order to use it.



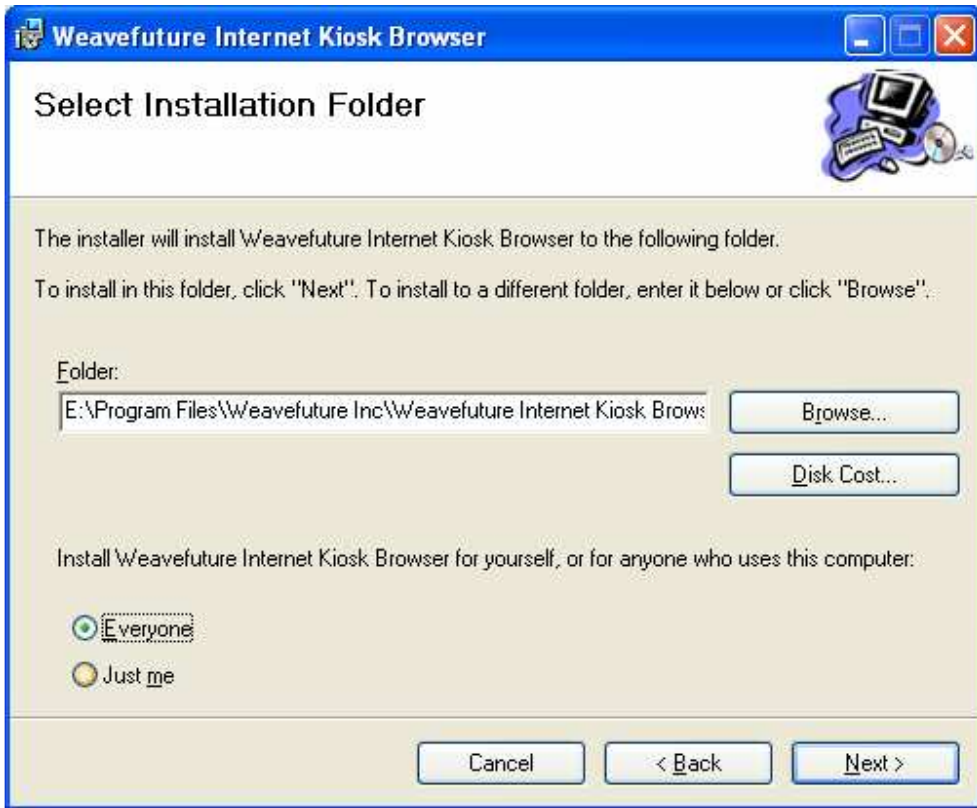
## 4.1 Installation Procedure

- Login to Windows 2000/XP as a user of Administrator.
- Download the demo software from <http://www.weavefuture.com/download/WeavefutureKioskBrowser.msi>
- Unzip it to a temporary directory, and go to the temporary directory and double click the Setup.exe in the Windows Explore (not IE).
- Following the procedure as show in the screenshot to install the software

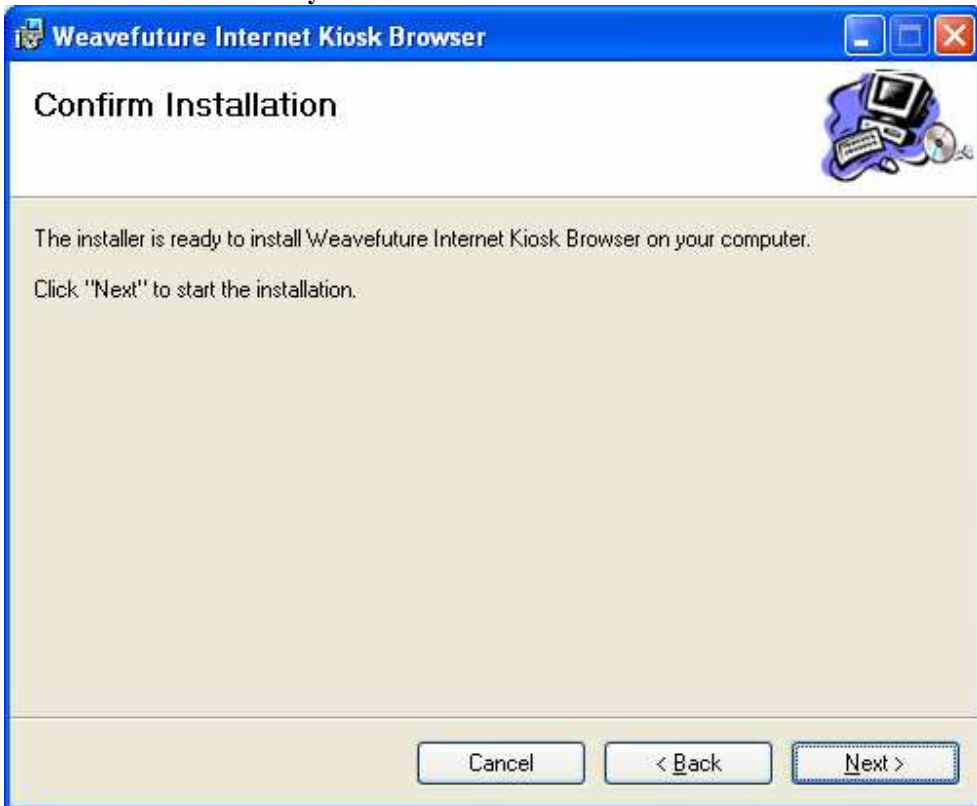




WeaveFuture



**You need to check the Everyone**





WeaveFuture

